



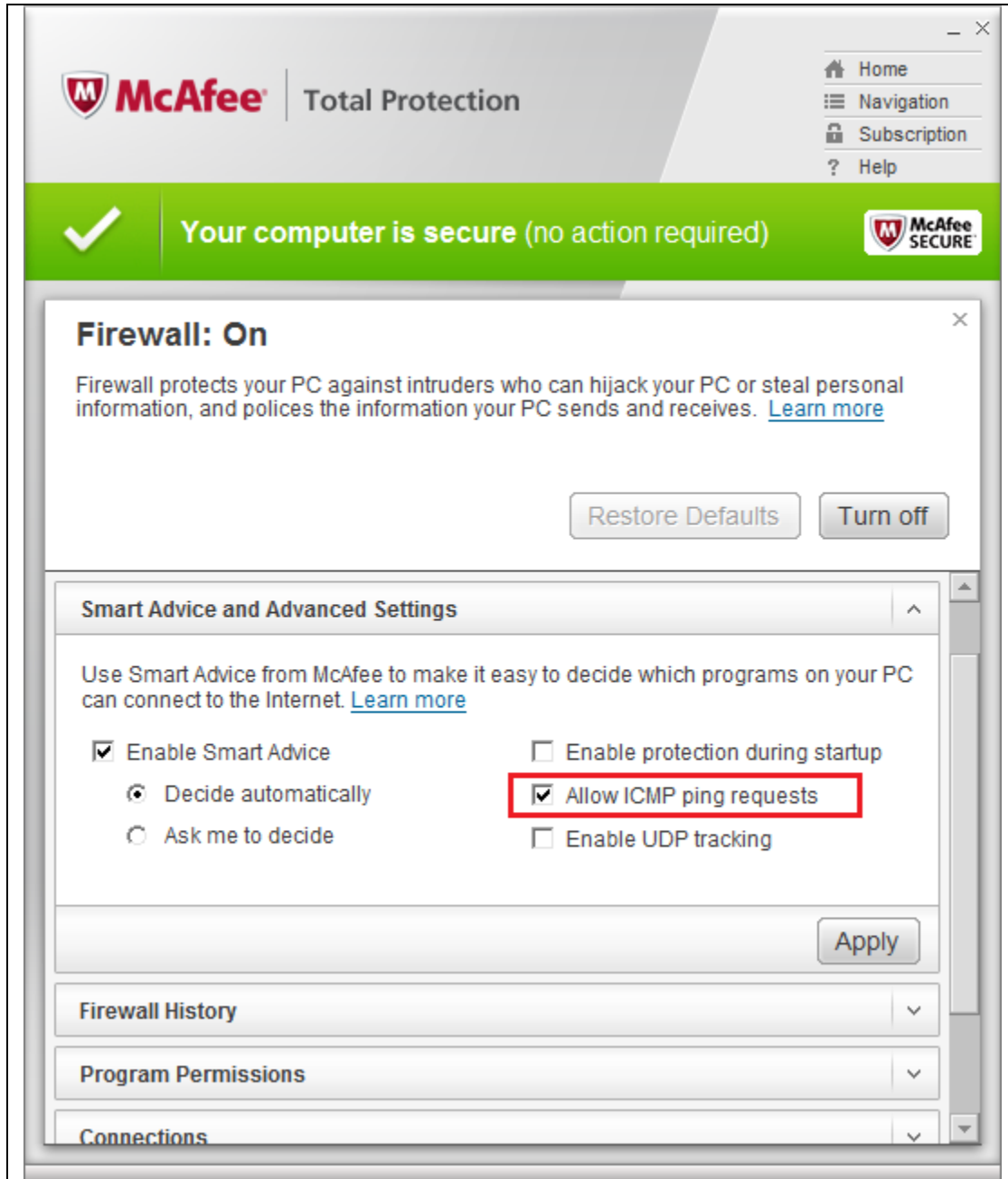
Initiate the McAfee Total Protection application and navigate to the Ports and System Services page. Check the box for highlighted port/service listed below..

The screenshot shows the McAfee Total Protection application window. At the top, it says "McAfee Total Protection" and "Your computer is secure (no action required)". Below this is a "Firewall: On" section with a description and buttons for "Restore Defaults" and "Turn off". The main area is titled "Ports and System Services" and contains a list of services with checkboxes. The "Windows File Sharing (NETBIOS) Ports 137-139" entry is highlighted with a red box. At the bottom of the list are "Edit", "Add", and "Delete" buttons.

Service	Protocol	Ports
<input type="checkbox"/> File Transfer Protocol (FTP) Ports 20-21	Local TCP/IP	Ports:20-21
<input type="checkbox"/> Mail Server (IMAP) Port 143	Local TCP/IP	Ports:143
<input checked="" type="checkbox"/> Windows File Sharing (NETBIOS) Ports 137-139	Local TCP/IP	Ports:137-139
<input type="checkbox"/> Network Time Protocol Port 123	Local UDP	Ports:123
<input checked="" type="checkbox"/> Common Operating System Ports	Local TCP/IP	Ports:5357
<input type="checkbox"/> Mail Server (POP3) Port 110	Local TCP/IP	Ports:110

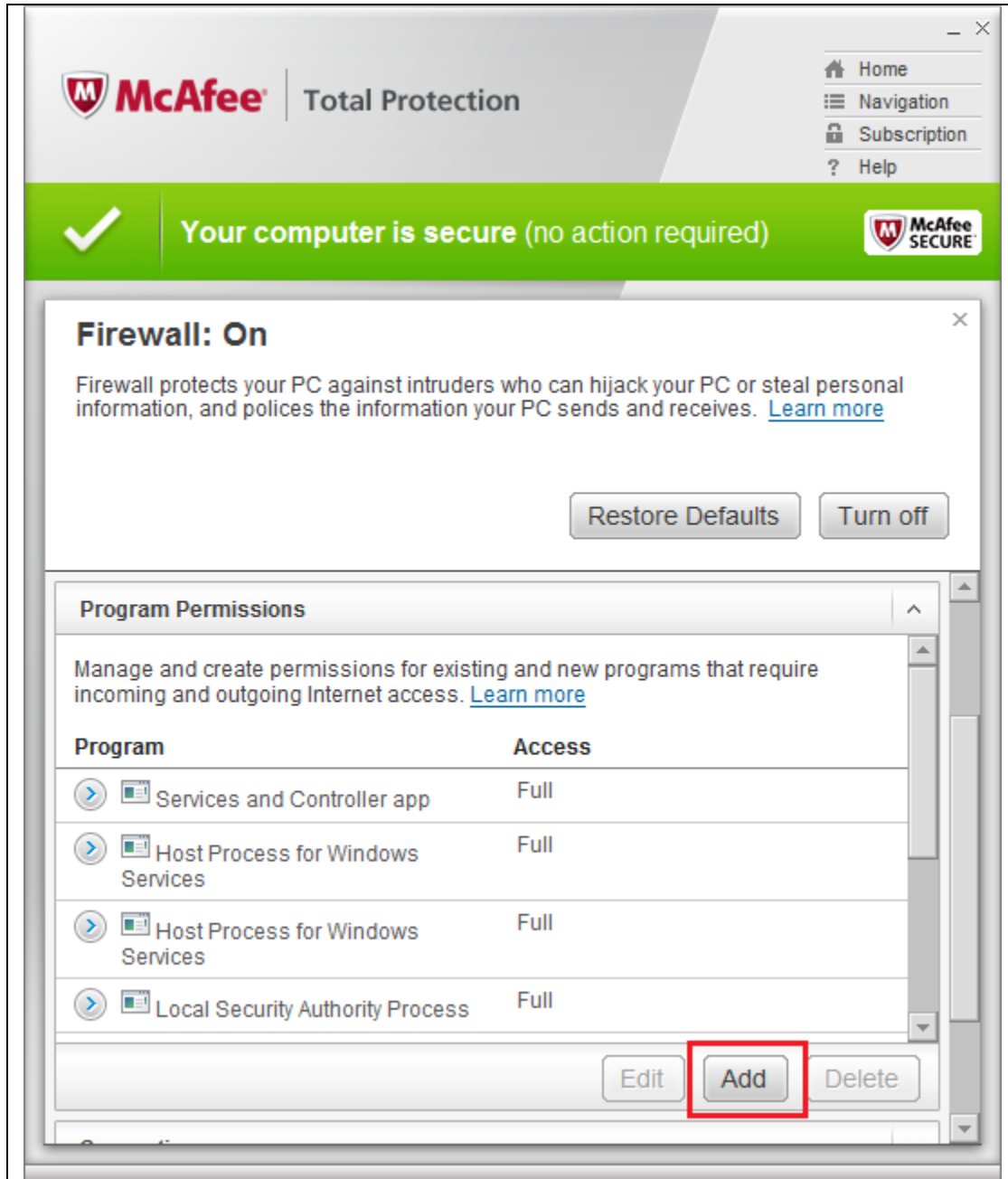


On the Smart Advice and Advanced Settings dropdown check the box to Allow ICMP ping requests.



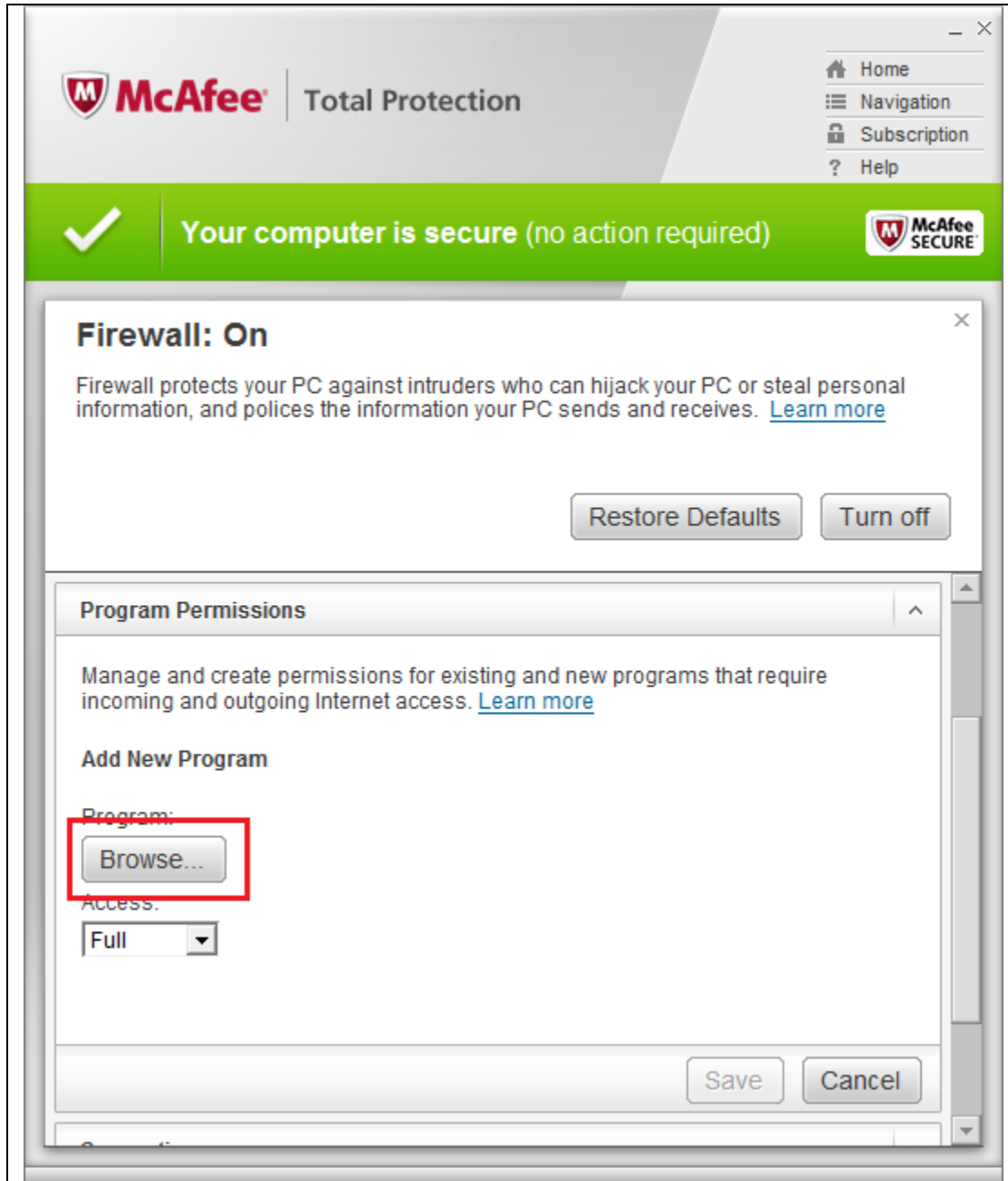


Select Add to add a new Program Permission



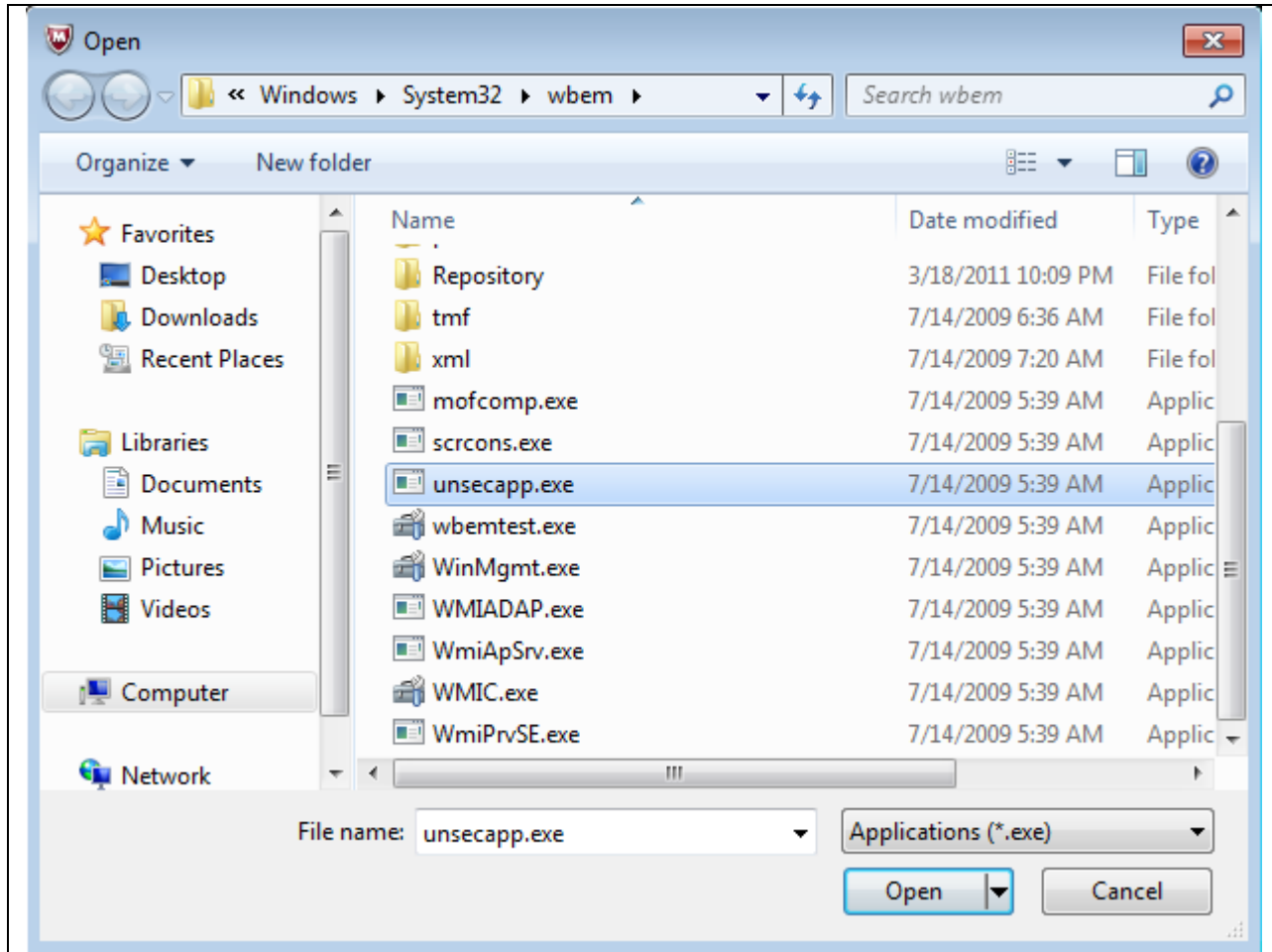


Select Browse to open a file explorer



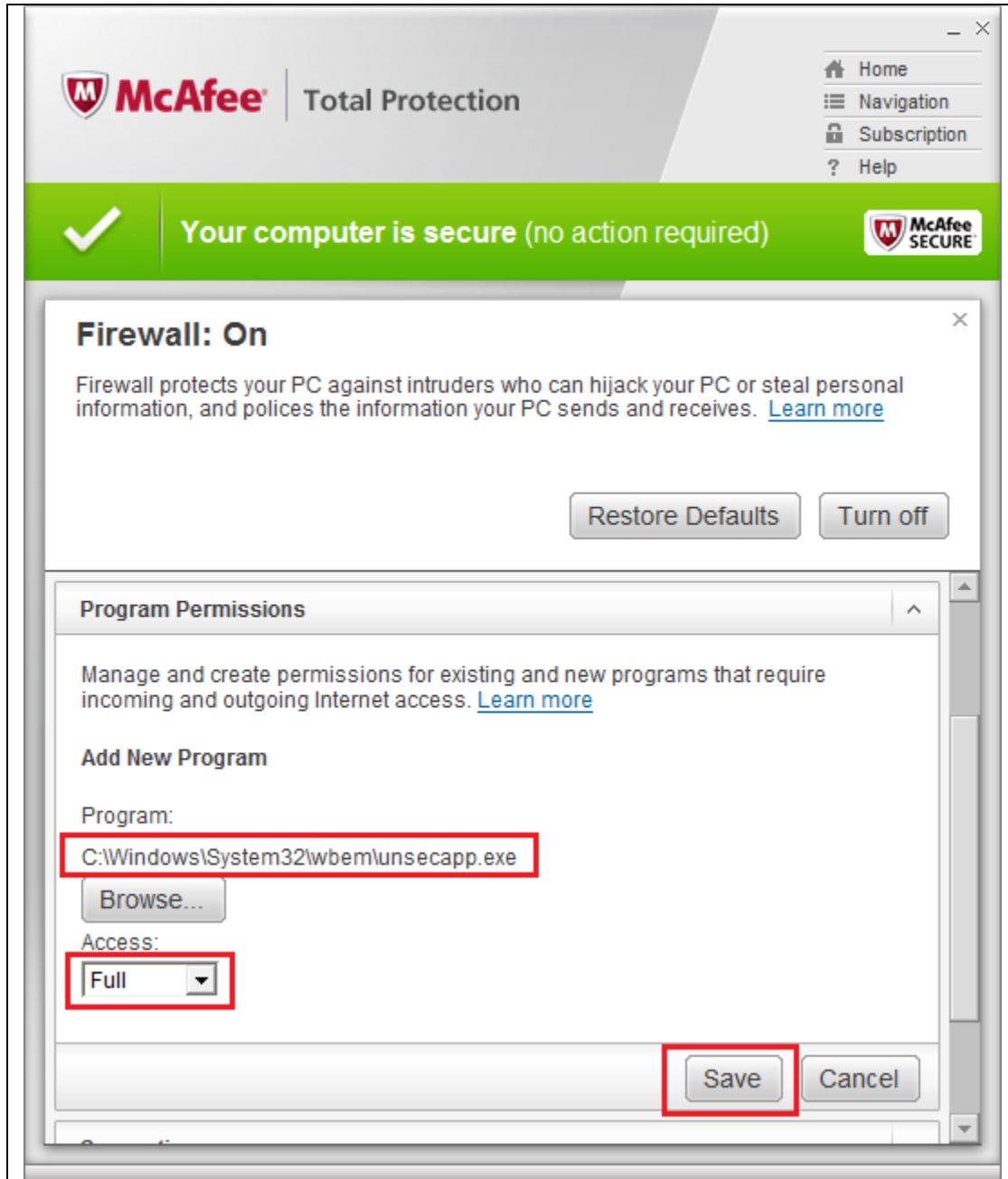


Follow the path shown and select Unsecapp.exe





Confirm the correct path, set Access to Full and then click Save





Navigate to the Ports and System Services drop down and check the Remote Procedure Calls port 135 check box

McAfee Total Protection

Home
Navigation
Subscription
Help

Your computer is secure (no action required)

Firewall: On

Firewall protects your PC against intruders who can hijack your PC or steal personal information, and polices the information your PC sends and receives. [Learn more](#)

Restore Defaults Turn off

Firewall History

Program Permissions

Connections

Ports and System Services

<input type="checkbox"/>	Remote Desktop / Remote Assistance / Terminal Server Port 3389	Local TCP/IP Ports:3389	RDP Port used for Remote Assistance, Terminal Server and Remote Desktop
<input checked="" type="checkbox"/>	Remote Procedure Calls (RPC) Port 135	Local TCP/IP Ports:135	RPC Server Port
<input type="checkbox"/>	Secure Web Server (HTTPS) Port 443	Local TCP/IP Ports:443	HTTPS Web Server Port
<input type="checkbox"/>	Mail Server (SMTP) Port 25	Local TCP/IP Ports:25	SMTP Server Ports



Add another program permission exception as listed below. Save your settings. You have completed the required configuration.

